

# Lundquist WIC Program

To educate and empower families to live healthier lives

Lundquist WIC Executive Director  
 Marisela Montoya, Ed.D, IBCLC  
 mmontoya@slahp.org



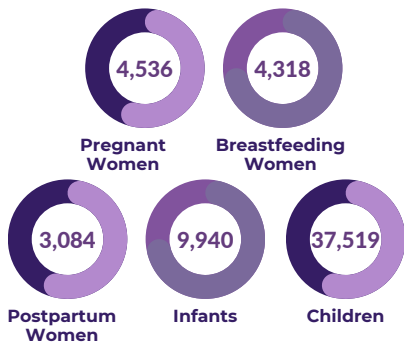
## Who Participates in Lundquist WIC

Serving families across 11 locations in South Los Angeles



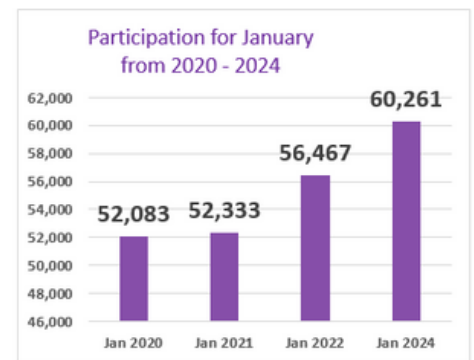
## Growth in WIC Participation

Participation in the Lundquist WIC Program continues to increase



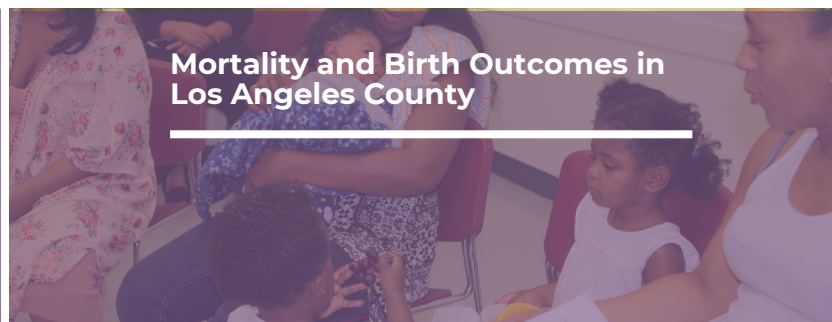
## Languages Served

- English
- Spanish
- Amharic
- Armenian
- Cambodian
- Chinese
- American Sign Language
- Farsi
- French
- Gujarati
- Portuguese
- Russian
- Vietnamese



## Breastfeeding

Serving families across 11 locations in South Los Angeles



## Mortality and Birth Outcomes in Los Angeles County

The breastfeeding/chestfeeding initiation rate is 33%, and approximately 19% continue exclusive breastfeeding/chestfeeding for the first 12 weeks postpartum.

Maternal mortality per 100,000 births, 2019 (an increase from 17.9 in 2016)

21.5

Infant mortality per 1,000 live births, 2019

3.7

Preterm birth per 100 live births, 2021

9.4



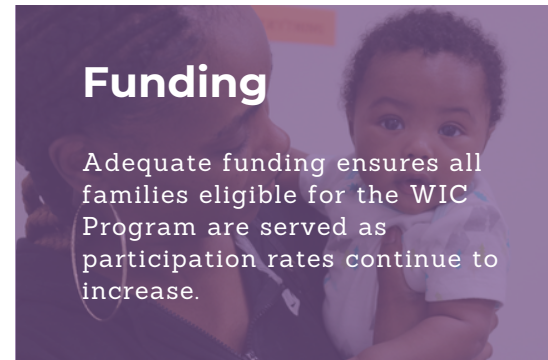
## Food Insecurity

Twenty nine percent of WIC Participants in Los Angeles County are food insecure.



## Fruit and Vegetable Benefit Bump

With the enhanced fruit and vegetable benefit families are consuming more fruits and vegetables with important nutrients contributing to better health.



## Funding

Adequate funding ensures all families eligible for the WIC Program are served as participation rates continue to increase.