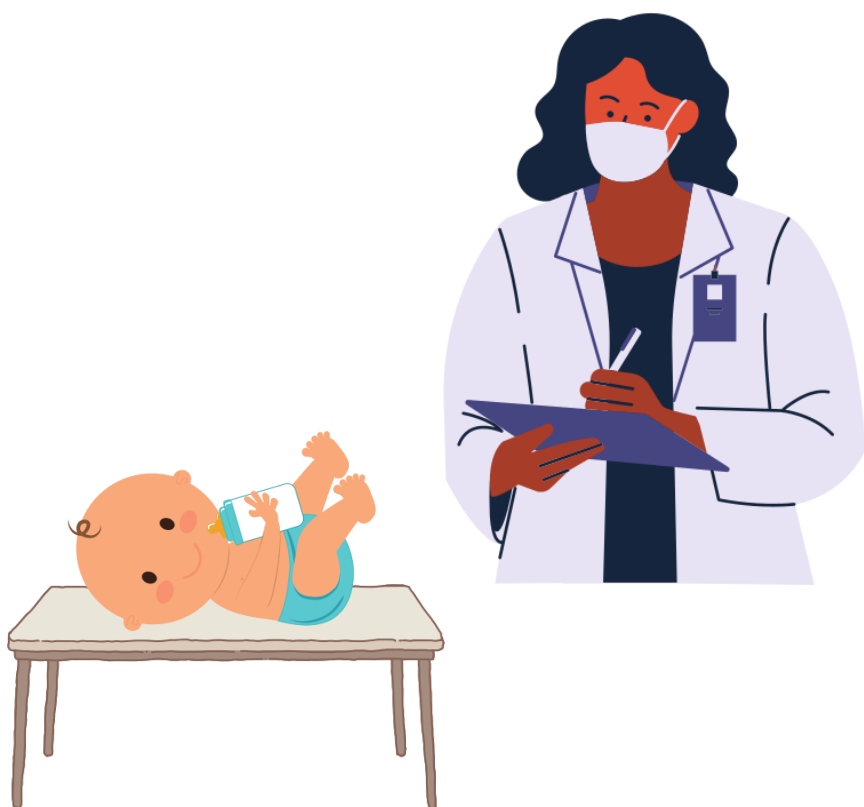


Therapeutic Formula and Medi-Cal



This institution is an equal opportunity provider

What is therapeutic formula?

Therapeutic formula is designed to treat nutritional and medical problems and require a medical prescription. All Medi-Cal Health Plans and some private insurance plans cover it if your child has a medical condition that requires the use of a therapeutic formula including:

Premature Infant Formulas

Similac NeoSure

Enfamil NeuroPro EnfaCare

Infant Formulas for Milk Protein Allergy

Alfamino

Alimentum

EleCare

Gerber Extensive HA

Neocate

Nutramigen Concentrate

Nutramigen LGG Powder

Pregestimil

PurAmino

Infant Low Iron/Low Mineral Formula

Similac PM 60/40

Toddler Formulas for Milk Protein Allergy

Alfamino Jr.

EleCare Jr.

Neocate Jr.

Nutramigen LGG Toddler

PurAmino Jr.

Toddler Supplemental Formulas

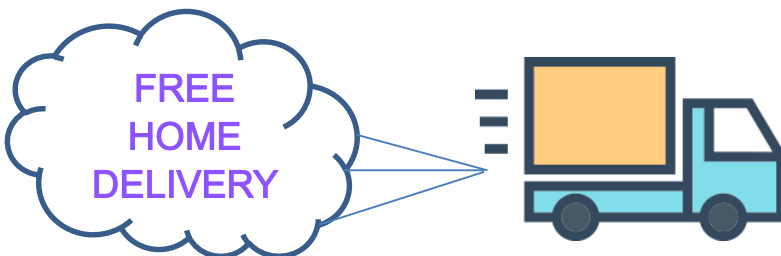
Boost Kid Essentials

Nutren Jr.

PediaSure

Does WIC provide therapeutic formula?

Therapeutic formula is a medical necessity and it is a benefit covered by Medi-Cal. WIC will give you a list of pharmacies that provide therapeutic formula.



Which pharmacies provide therapeutic formula?

Those that fill prescriptions for nutrition products.
Call any of the three pharmacies listed below:

Pharmacy	Phone	Fax	Email Address
California Medical	213-413-2343 x236	213-413-1354	ara@calmedpharm213.com
Delta Drugs	800-700-6401	866-700-6401	info@deltadrugs.com
DialHealth Care	310-515-8425	310-515-8426	dial@dialpharmacy.com

What will the pharmacy need?

- The therapeutic formula prescription including the doctor's name, signature and contact information
- Your child's name, date of birth and Medi-Cal number
- Your name, address and phone number

Can I send the prescription to the pharmacy?

Yes. You can send it by fax or by email. If WIC sends it, you will need to sign/agree to the WIC Consent to Release Personal Information Form.

Regardless of who sends the prescription, please call the pharmacy to make sure they received it. Ask them if they need any other information from you to fill the prescription.

What can I do so my child gets their monthly formula delivery without interruption?



When enrolling in Medi-Cal, complete and return the packet within 30 days. This will give you the option of staying with the same doctor.

Keep all medical appointments.



Let the doctor know the name of the pharmacy that will contact him/her for information to process or refill your child's prescription.



Call the pharmacy if the delivery does not arrive as expected.

Report any changes in your address, phone number, child's doctor or child's Medi-Cal status.

To ensure that we are providing your child with the correct food package, WIC requires a new prescription from your doctor:

- At age 6 months to let us know when your child can start solids and/or for how long formula only is needed.
- When your child needs a different formula, even if it's a regular formula.

Who can I contact if I still need help?

Call WIC at (310) 661-3080. Ask for Nancy Damiani or for your WIC Nutritionist at your WIC Site.